



**Disability services. Putting you first.**

# Supported Employment



## Easy English

This book is written in an easy to read way.

We use pictures to explain ideas.





In this book **we** or **our** means

**Aruma.**



**Supported Employment** jobs are for people with a disability who need support at work.

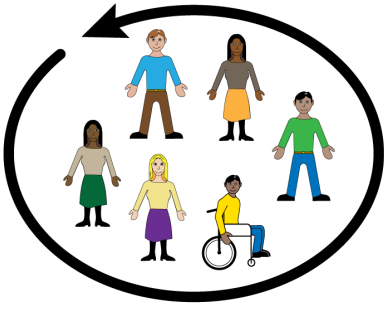
You will



- earn your own money



- get experience



- work in a team

We have 8 places you can get a job.

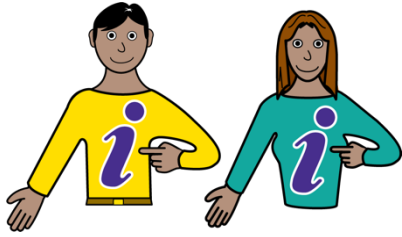
You can be a



- gardener



- receptionist



- tour guide



- cook

- and more

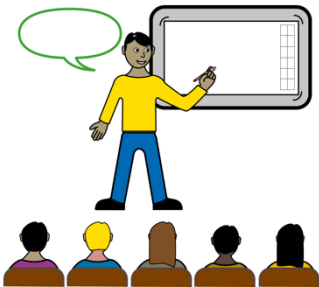
You do not need to have any  
experience to join the team.

We can



- support you

and



- teach you new skills



To get a job at Aruma you need to



- have a Disability Support Pension or DSP

and

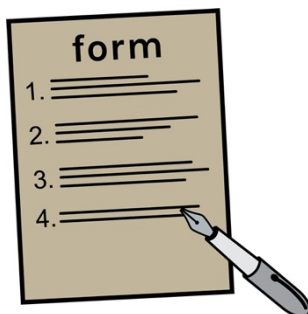


- have a NDIS plan that says you can get support to find and keep a job



Our team can help you apply for a job at Aruma.

They can help you



- fill out forms



- work out what job you want to do



- work out what support you need



**Talk to us**



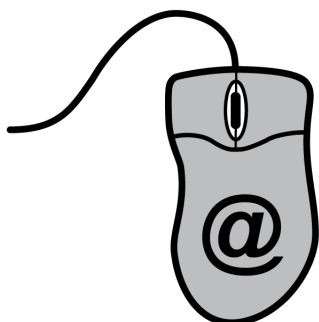
**Visit our website**

[aruma.com.au](http://aruma.com.au)



**Phone**

1300 538 746



**Email**

[enquiries@aruma.com.au](mailto:enquiries@aruma.com.au)